

Written for my friend, Brian Kilian, and the chancel choir of the Church of the Advent, Nashville, Tennessee.

FRANKLIN CREDO

BENJAMIN FRANKLIN

CAROL BARNETT

♩ = c. 120

SOPRANO

Here is my Creed.

ALTO

Here is my Creed.

I believe in one God,

TENOR

Here is my Creed.

I believe, I believe, I believe, I believe,

BARitone

Here is my Creed.

I believe, I believe, I believe, I believe, I believe, I believe,

PIANO
(for rehearsal only)

♩ = c. 120

6

S I believe in one God, Cre-a-tor of the

A Cre-a-tor of the U-ni-verse. I believe in one God, Cre-a-tor of the

T I be-lieve, I be-lieve, I be-lieve, I be-lieve, I be-lieve, I be-lieve, I be-lieve, I be-lieve,

B I be-lieve, I be-lieve, I be-lieve, I be-lieve, I be-lieve, I be-lieve, I be-lieve, I be-lieve,

PNO.

11

10

S U-ni-verse. I be-lieve in one God, - Cre-a-tor of the U-ni-verse. -

A U-ni-verse. I be-lieve in one God, - Cre-a-tor of the U-ni-verse. -

T I be-lieve, I be-lieve, I be-lieve, I be-lieve, I be-lieve, I be-lieve, I be-lieve, I be-lieve,

B I be-lieve, I be-lieve, I be-lieve, I be-lieve, I be-lieve, I be-lieve, I be-lieve, I be-lieve,

PNO.

14

S I be-lieve in one God, - Cre-a-tor of the U-ni-verse. -

A I be-lieve in one God, - Cre-a-tor of the U-ni-verse. -

T I be-lieve, I be-lieve, I be-lieve, I be-lieve, I be-lieve, I be-lieve, I be-lieve, I be-lieve,

B I be-lieve, I be-lieve, I be-lieve, I be-lieve, I be-lieve, I be-lieve, I be-lieve, I be-lieve,

PNO.

19 *mf*

S I be-lieve, I be-lieve, I be-lieve, I be-lieve, I be-lieve, I be-lieve,

A That he gov-erns it ___ by his Prov-i-dence. That he ought to be

T I be-lieve, I be-lieve, that he gov-erns it ___ by his Prov-i-dence. That he ought to be

B I be-lieve, I be-lieve, I be-lieve, I be-lieve, I be-lieve, I be-lieve, I be-lieve, I be-lieve,

PNo. *mf*

22

S I be-lieve, I be-lieve, that he gov-erns it ___ by his Prov-i-dence. That he ought to be

A wor-shipped. ___ I be-lieve, I be-lieve, I be-lieve, I be-lieve, I be-lieve, I be-lieve,

T wor-shipped. ___ I be-lieve, I be-lieve, I be-lieve, I be-lieve, I be-lieve, I be-lieve,

B I be-lieve, I be-lieve, that he gov-erns it ___ by his Prov-i-dence. That he ought to be

PNo.

26

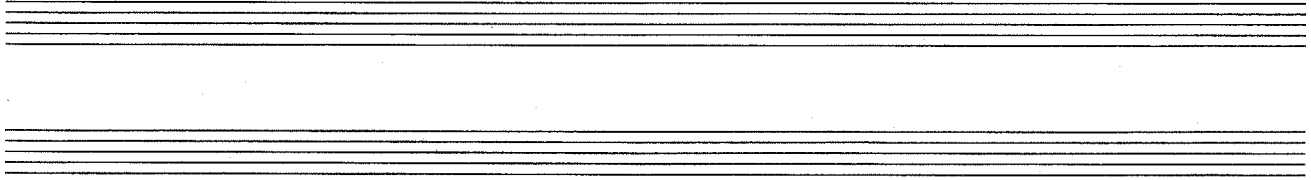
S wor-shipped. — I be-lieve_ that the most ac-cept-a-ble Ser-vice we ren-der to him_ is

A I be-lieve, I be-lieve, I be-lieve_ that the most ac-cept-a-ble Ser-vice we ren-der to him_ is

T I be-lieve, I be-lieve, I be-lieve_ that the most ac-cept-a-ble Ser-vice we ren-der to him_ is

B wor-shipped. — I be-lieve_ that the most ac-cept-a-ble Ser-vice we ren-der to him_ is

PNo.



30

S do-ing good_ to his oth-er Chil-dren. _____ That the soul of Man is im-

A do-ing good_ to his oth-er Chil-dren. _____ That the soul of Man is im-

T do-ing good_ to his oth-er Chil-dren. _____ That the soul of Man is im-

B do-ing good_ to his oth-er Chil-dren. I be-lieve, I be-lieve, I be-lieve, I be-lieve, I be-lieve, I be-lieve,

PNo.

35 *mf* *poco a poco dim.*

S mor — tal, and will be treat-ed with Jus — tice in an — oth-er Life re —

A *mf* *poco a poco dim.*

T *mf* *poco a poco dim.*

B I be-lieve, I be-lieve, I be-lieve, I be-lieve, I be-lieve, I be-lieve, I be-lieve, I be-lieve,

PNO. *mf* *poco a poco dim.*

39 *p* 42

S spect-ing its Con-duct in this. I be-lieve, I be-lieve, I be-lieve, I be-lieve,

A *p* spect-ing its Con-duct in this. These I take —

T *p* spect-ing its Con-duct in this. These I take —

B I be-lieve, I be-lieve, I be-lieve, I believe. — These I take —

PNO. *p* 42

43

S I be-lieve, I be-lieve, I be-lieve, I be-lieve, I be-lieve, and I re-gard them

A — to be the Prin-ci-pals of all sound Re-li-gion, and I re-gard them

T — to be the Prin-ci-pals of all sound Re-li-gion, and I re-gard them

B — to be the Prin-ci-pals of all sound Re-li-gion. I be-lieve, I be-lieve, I be-lieve,

PNo. *mp* *p*

47

S — in what-ev-er Sect I meet with

A — in what-ev-er Sect I meet with

T — in what-ev-er Sect I meet with

B I be-lieve, I be-lieve, I be-lieve, I be-lieve, I be-lieve, I be-lieve, I be-lieve, I be-lieve,

PNo. *p*

51

S them. *pp*

A them. *pp*

T them. I be-lieve, I be-lieve, I be-lieve. *pp*

B I be-lieve, I be-lieve, I be-lieve, I be-lieve, I be-lieve. *pp*

PNo. *pp*